



THE UNIVERSITY OF TEXAS  
**MD Anderson**  
**Cancer Center**

Making Cancer History®



## **Cardio-Oncology Program: Multidisciplinary Supportive Care of Patients with Cardiac Disease**

**Global Cardio-Oncology Summit 2018 – September 27-28, 2018**

Anecita Fadol, PhD, FNP-BC, FAANP  
Associate Professor  
Departments of Nursing and Cardiology

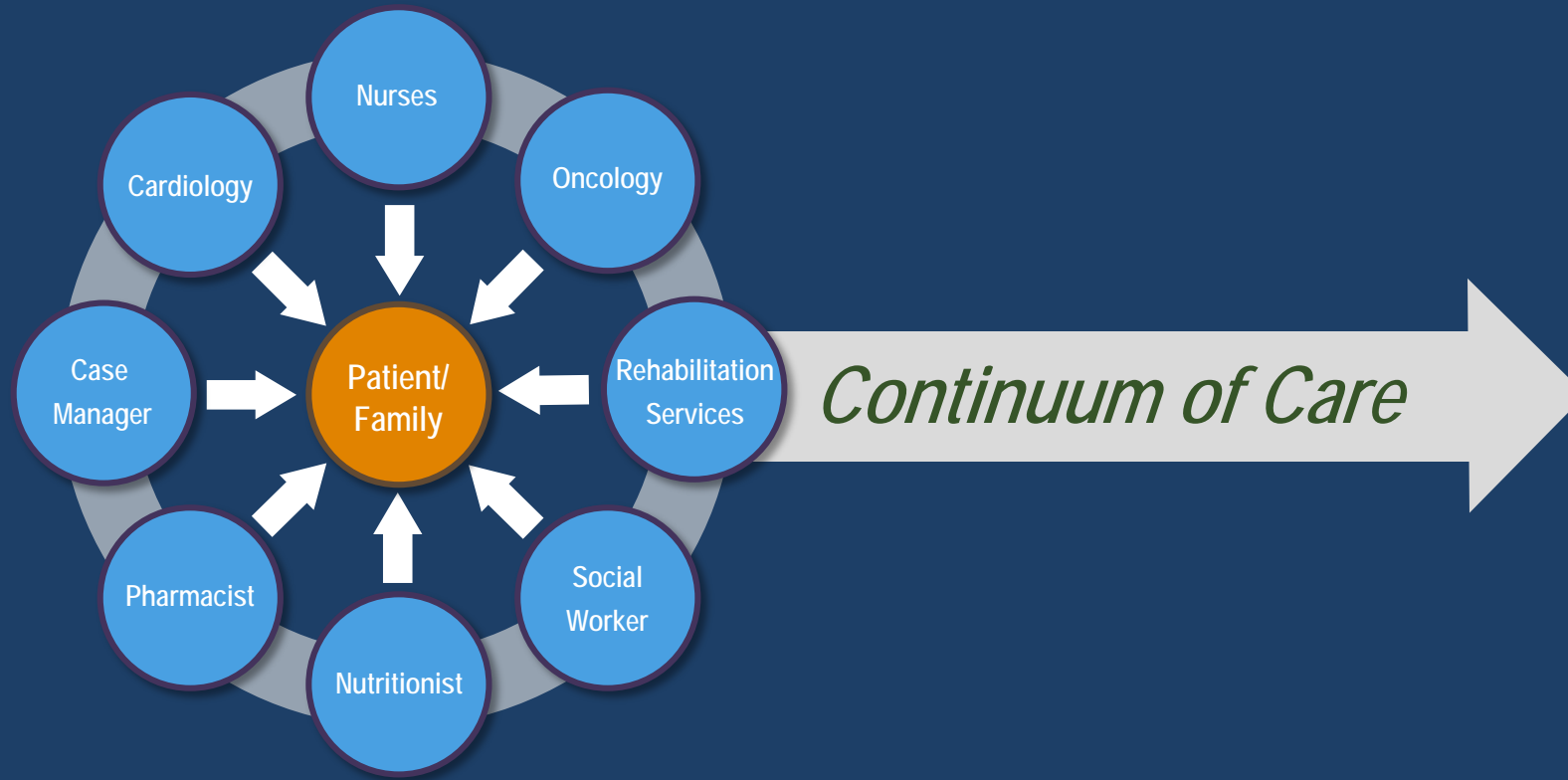
# Patient Discharges with Heart Failure Diagnosis at MD Anderson

Fiscal Year	Total Hospital Discharges	Heart Failure Discharge Diagnosis*	30-Day Re-admission
2012	26,233	961 (3.6%)	381 (40%)
2013	27,137	1080 (3.9%)	394 (36%)
2015	28,203	1344 (4.8%)	280 (21%)
2016	28,467	982 (3.4%)	269 (27%)

*\*Discharge diagnosis includes heart failure as principal and secondary diagnoses (ICD 10 codes)*



# Heart Success Program



<b>Location</b>	Emergency Center/Inpatient	Outpatient/Cardiomyopathy Clinic	Home/Hospice
<b>Tools</b>	Heart Failure Order Set	Heart 2 Heart Support Group	Home Care



# What are the roles of nurses in the Cardio-Oncology Program?

**Coordinator**

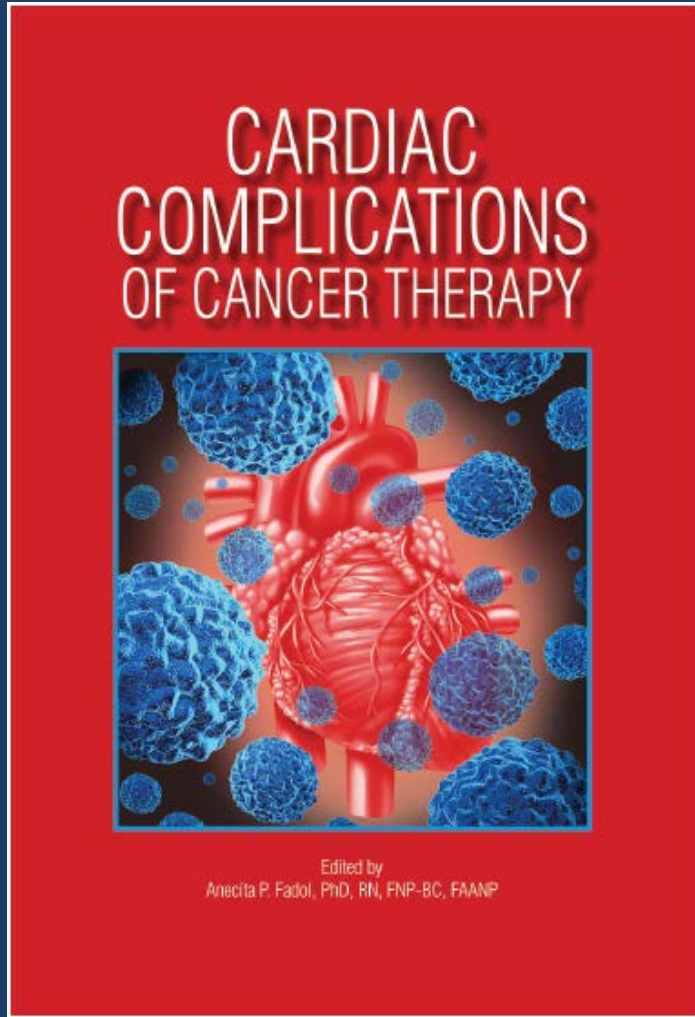
**Educator**

- health care providers
- patients and families

**Discharge planner**

**Quality Improvement**


# Heart Success Program Team Education



Register through Education Center using the course title NPDEE-CE-0045-001

## Cardiac Complications of Cancer Therapy


Division of Nursing Cardiovascular Conference  
in Collaboration with the Department of Cardiology



Monday, April 24, 2017  
8:00 a.m. - 4:30 p.m.  
Hickey Auditorium

Nursing Continuing Education Credit will be awarded for this program.

The University of Texas MD Anderson Cancer Center is an approved provider of continuing nursing education by the Texas Nurses Association - Approver an accredited approver by the American Nurses Credentialing Center's Commission on Accreditation.

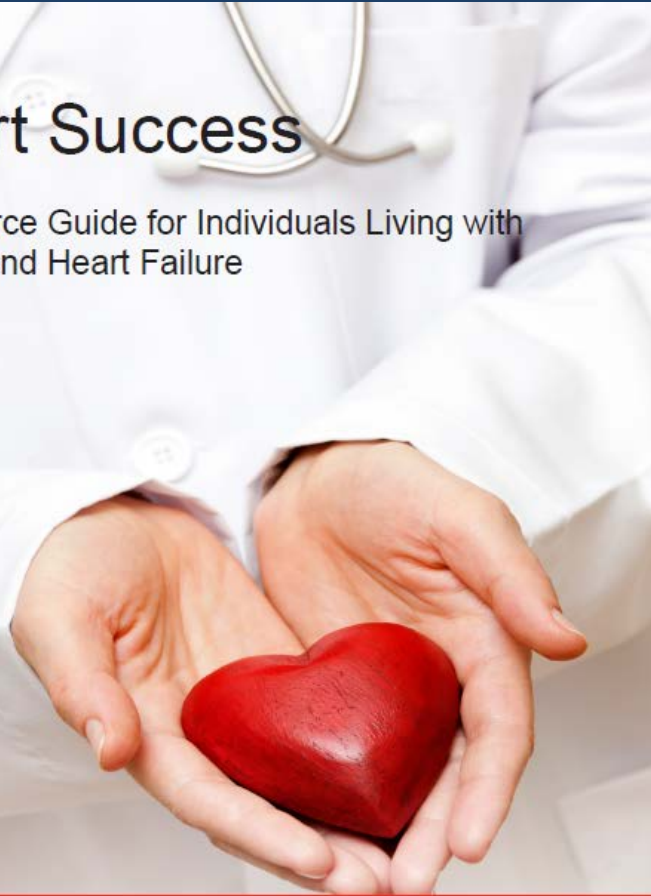


THE UNIVERSITY OF TEXAS  
**MD Anderson**  
Cancer Center  
Making Cancer History®



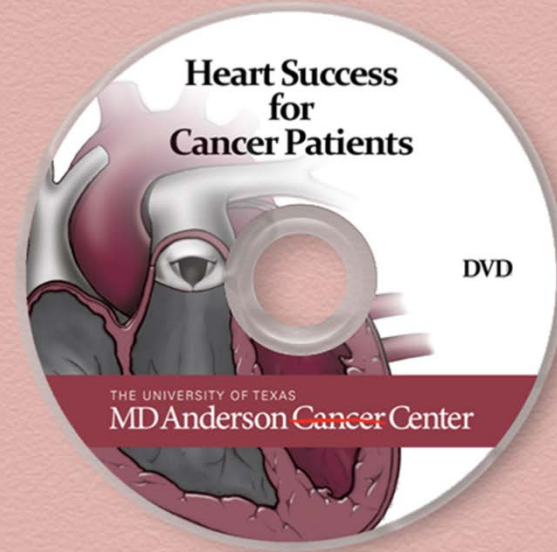
## Heart Success

A Resource Guide for Individuals Living with  
Cancer and Heart Failure



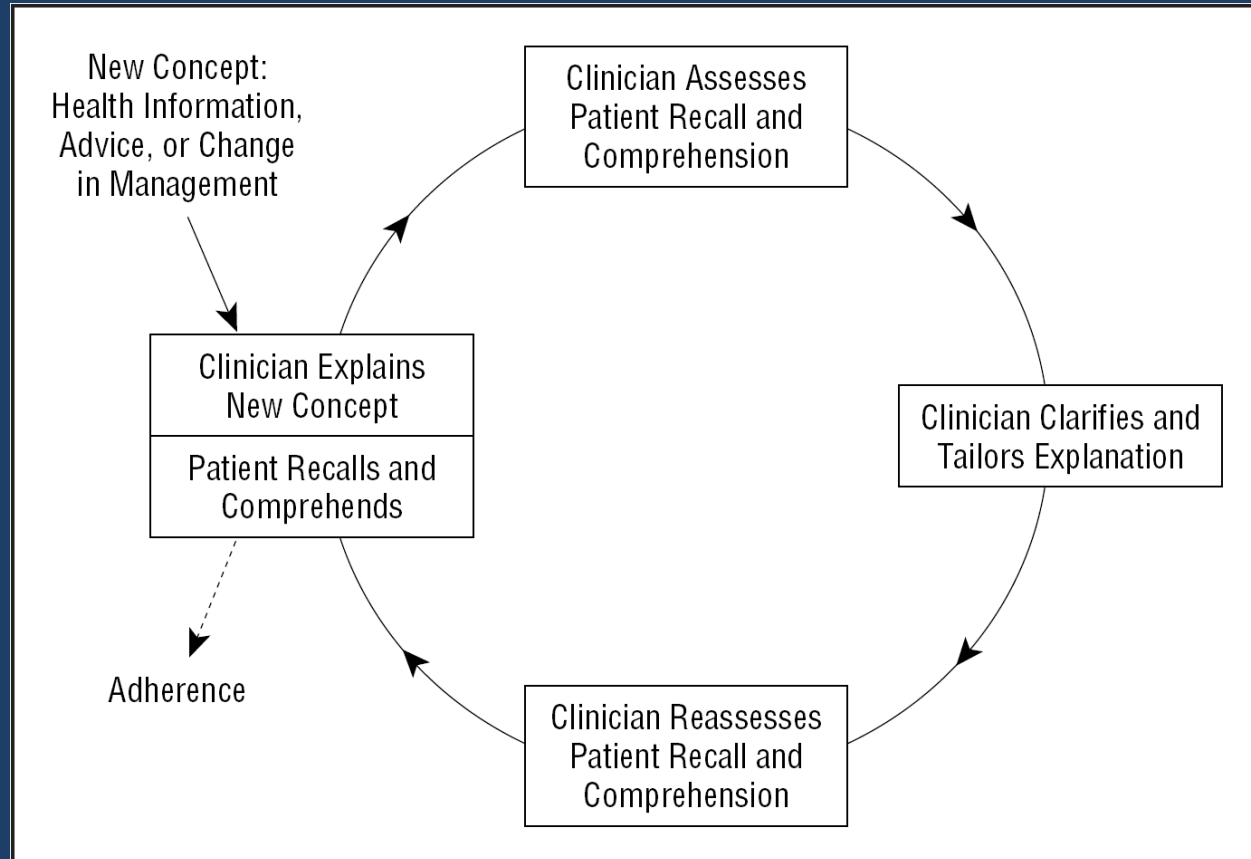
Making Cancer History®

THE UNIVERSITY OF TEXAS  
**MD Anderson**  
Cancer Center

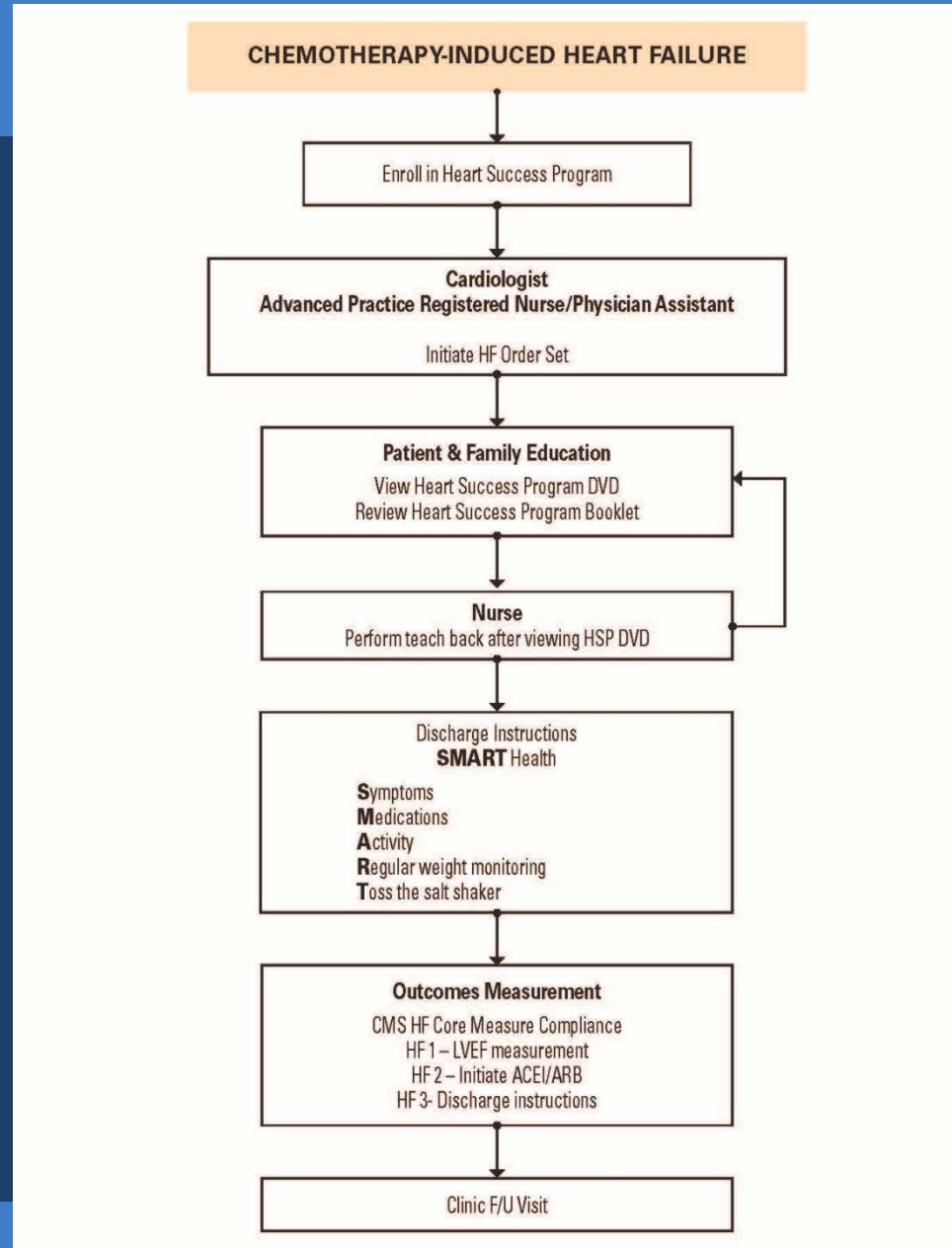




# Teach Back: Closing the Loop



# MD Anderson Practice (MAP)

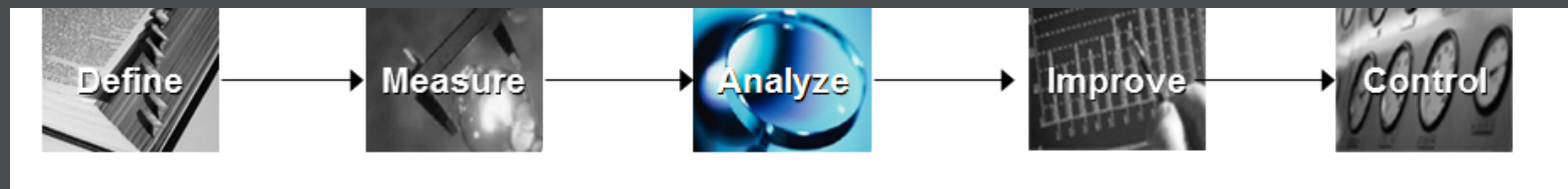




# Transition from Hospital to Home

## Review discharge instructions (**SMART**)

- **S**ymptoms
  - **M**edications
  - **A**ctivity
  - **R**egular weight monitoring
  - **T**oss the salt shaker
- Schedule outpatient follow-up with HCP
  - Review instructions with clinic visit



## Clinical Safety & Effectiveness

	Pre CS & E (11/01/16 – 3/31/17)	Post CS & E (7/03/17 – 12/31/17)
Total Discharges	1038	1256
Discharges with HF Dx	120 (11%)	133 (10.5%)
Readmissions for HF (within 30 days of DC)	38 (31.7%)	11 (8.27%)
Readmissions (other causes) (e.g. pneumonia, altered mental status, hypoxia, fever)		29 (21.8%)

# Protecting the heart is critical in Making Cancer History

“Heart Failure is not an Option”



Thank you.

[afadol@mdanderson.org](mailto:afadol@mdanderson.org)

Q & A

---

What's on your mind?

# References

Driver JA, Djousse L, Logroscino G, Gaziano JM, Kurth T. Incidence of cardiovascular disease and cancer in advanced age prospective cohort study. *British Medical Journal*. 2017. 337.a2467. doi.10.1136/bmj.a2467

Fadol A, Adornetto-Garcia D, Shelton V, Durand JB, Yeh ETH, Summers BL. Heart success program: An interdisciplinary patient-centered approach to cancer patients with concurrent heart failure. *Progress in Pediatric Cardiology* 39(2):99-105, 11/2015.

Ferlay J, Soerjomataram I, Dikshit R, Eser S, Mathers C, Rebelo M, et al. Cancer incidence and mortality worldwide: sources, methods and major patterns in GLOBOCAN 2012. *Int J Cancer*. 2015 Mar 1;136(5):E359–86. <http://dx.doi.org/10.1002/ijc.29210> pmid: 25220842

Han X, Zhou Y, Lu W. (2017) Precision Cardio-Oncology: Understanding the cardiotoxicity of Cancer Therapy. [www.nature.com/npjprecisiononcology](http://www.nature.com/npjprecisiononcology)

Mouhayar, Elie, et al. Cardiovascular Toxicity of TKIs. *Expert Opinion on Drug Safety*. 2013; 12(5): 687-96

Schillinger D, Piette J, Grumbach K, Wang F, Wilson C, Daher C, Leong-Grotz K, Castro C, Bindman A. Closing the Loop Physician Communication With Diabetic Patients Who Have Low Health Literacy. *Arch Intern Med/Vol* 163, Jan 13, 2003

Zamorano L, Lancellotti P, Rodriguez Muñoz D, Aboyans V, Asteggiano R, et al. 2016 ESC Position Paper on cancer treatments and cardiovascular toxicity developed under the auspices of the ESC Committee for Practice Guidelines. The Task Force for cancer treatments and cardiovascular toxicity of the European Society of Cardiology (ESC). *European Journal of Heart Failure*. (2017).19.9-42. <https://doi.org/10.1002/ejhf.654>